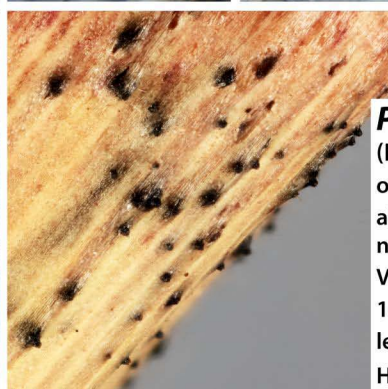


27.2-33.7 μ m
5.3-6.3 μ m
Qe = 5.2



Phaeosphaeria luctuosa
(Niessl ex Sacc.) Y. Otani & Mikawa

on dead culms of *Dactylis glomerata*
above Cornelian Bay
near Scarborough, North Yorkshire
VC62; TA05788599; 55 metres O.D.
16th October 2016
leg. & det. C.S.V. Yeates
Hb. CSVY/F/2706