

## On cornus sanguinea pits 2015.

21. sep 2015. (same location as 2014. collection)  
on *Cornus sanguinea* pits

Spore measurements:

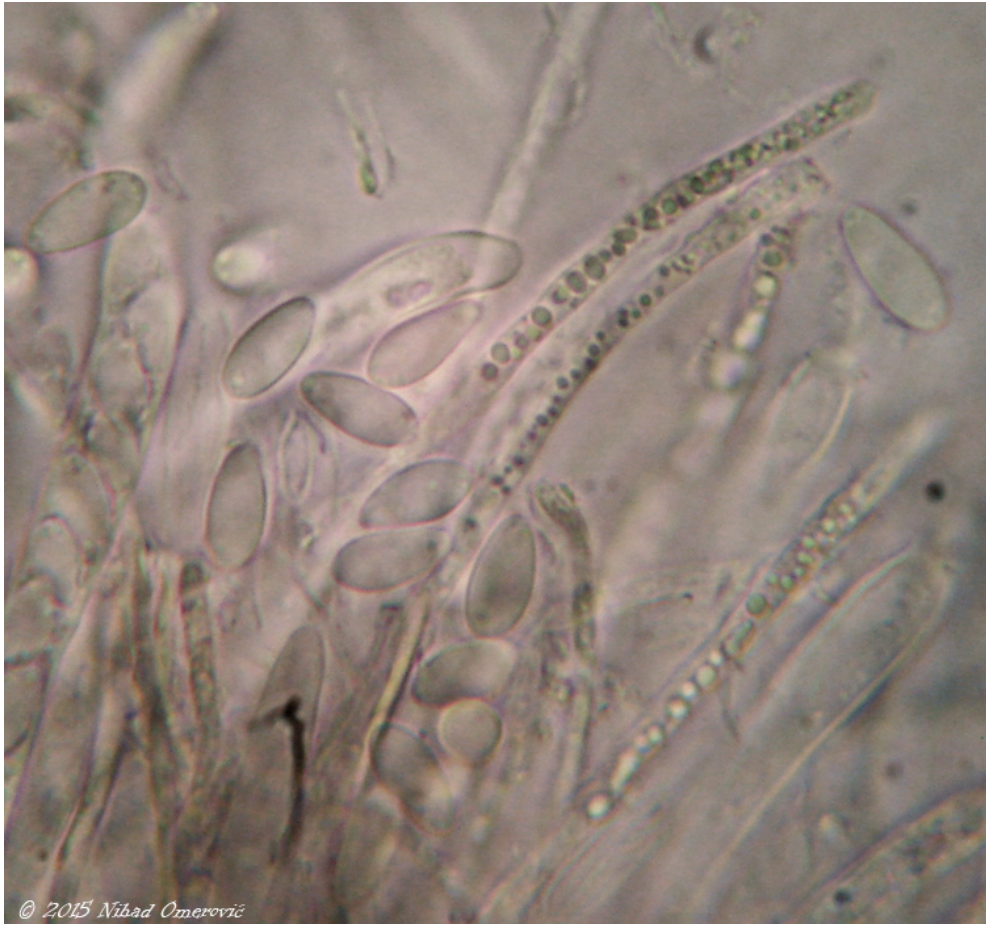
8.1 [8.5 ; 8.8] 9.3 x 3.8 [4 ; 4.1] 4.3  $\mu\text{m}$

Q = 2 [2.1 ; 2.2] 2.3 ; N = 18 ; C = 68%

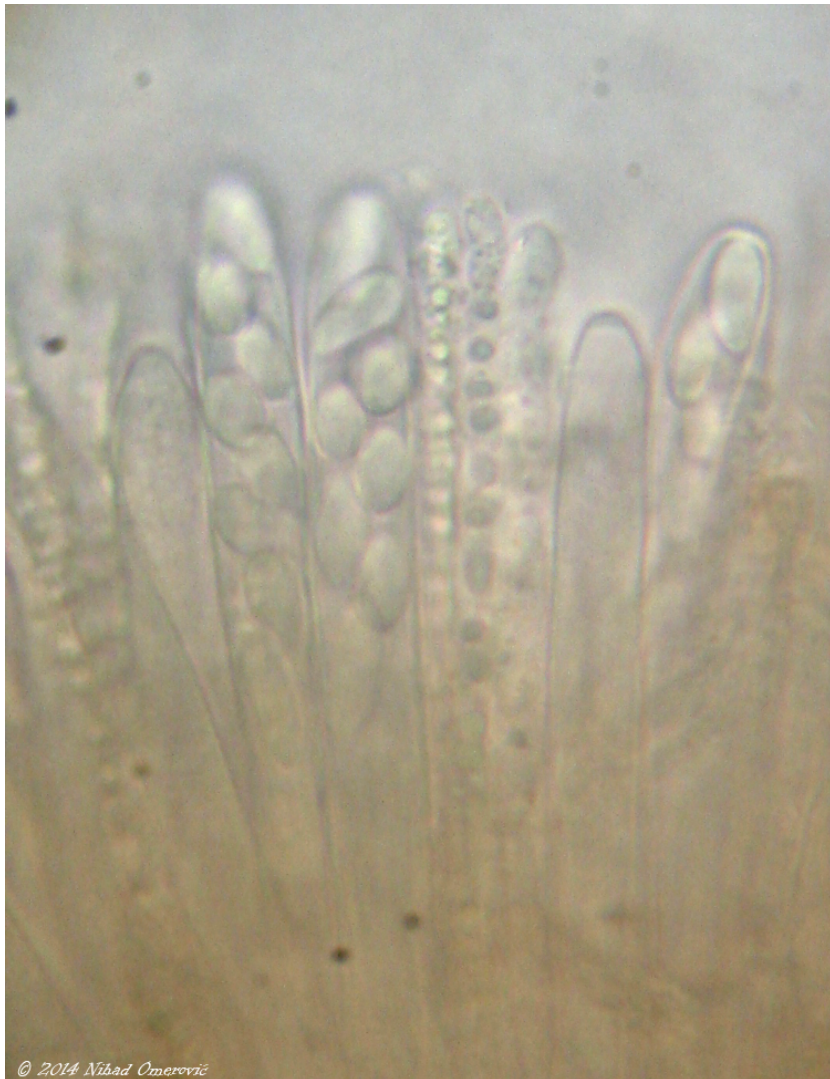
Me = 8.7 x 4  $\mu\text{m}$  ; Qe = 2.2

Asci: 85 x 7  $\mu\text{m}$ ; IKI + (weak reaction, Hymenoclyphus type?)





© 2015 Nihad Omerović



© 2014 Nihad Omerović



© 2015 Nihad Omerovic