

*Rutstroemia "pyri"*



© 2014 Nihad Omerović

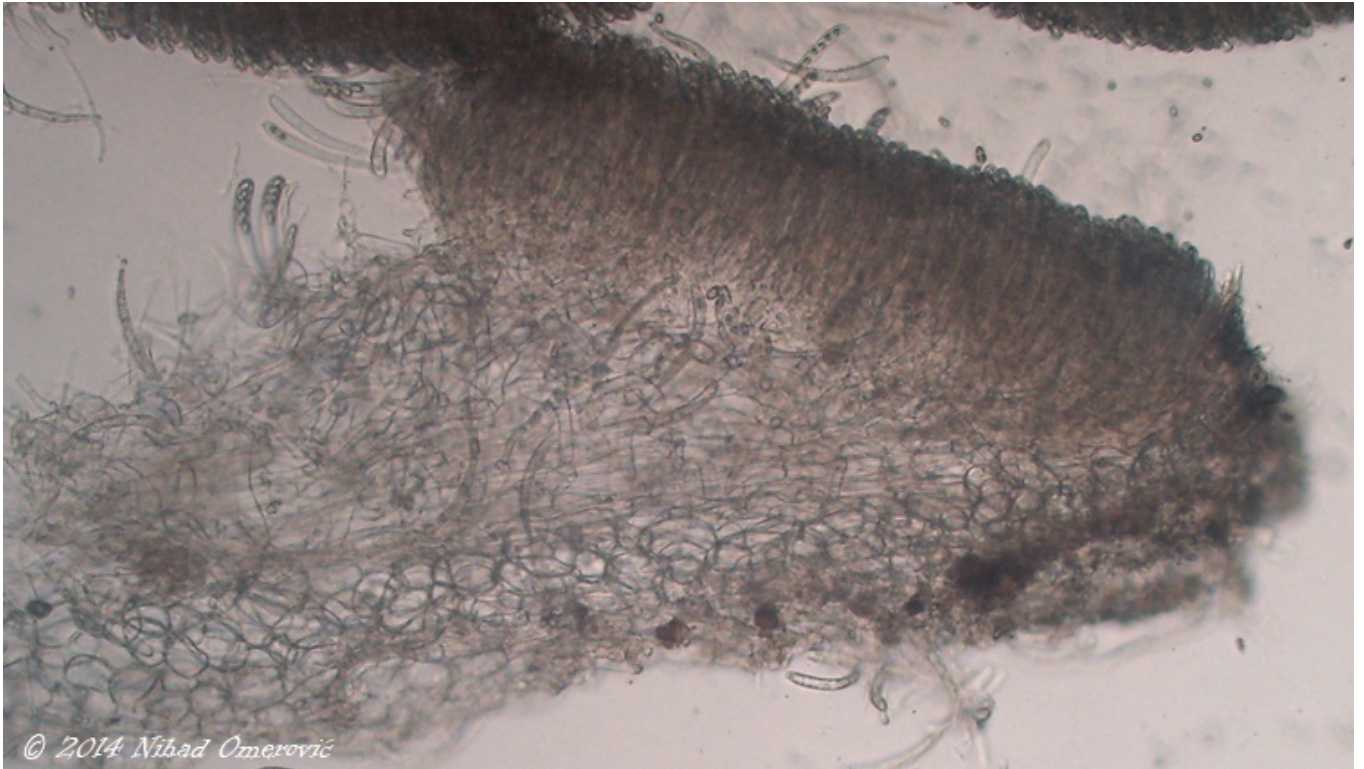


© 2014 Nihad Omerović









Spore:

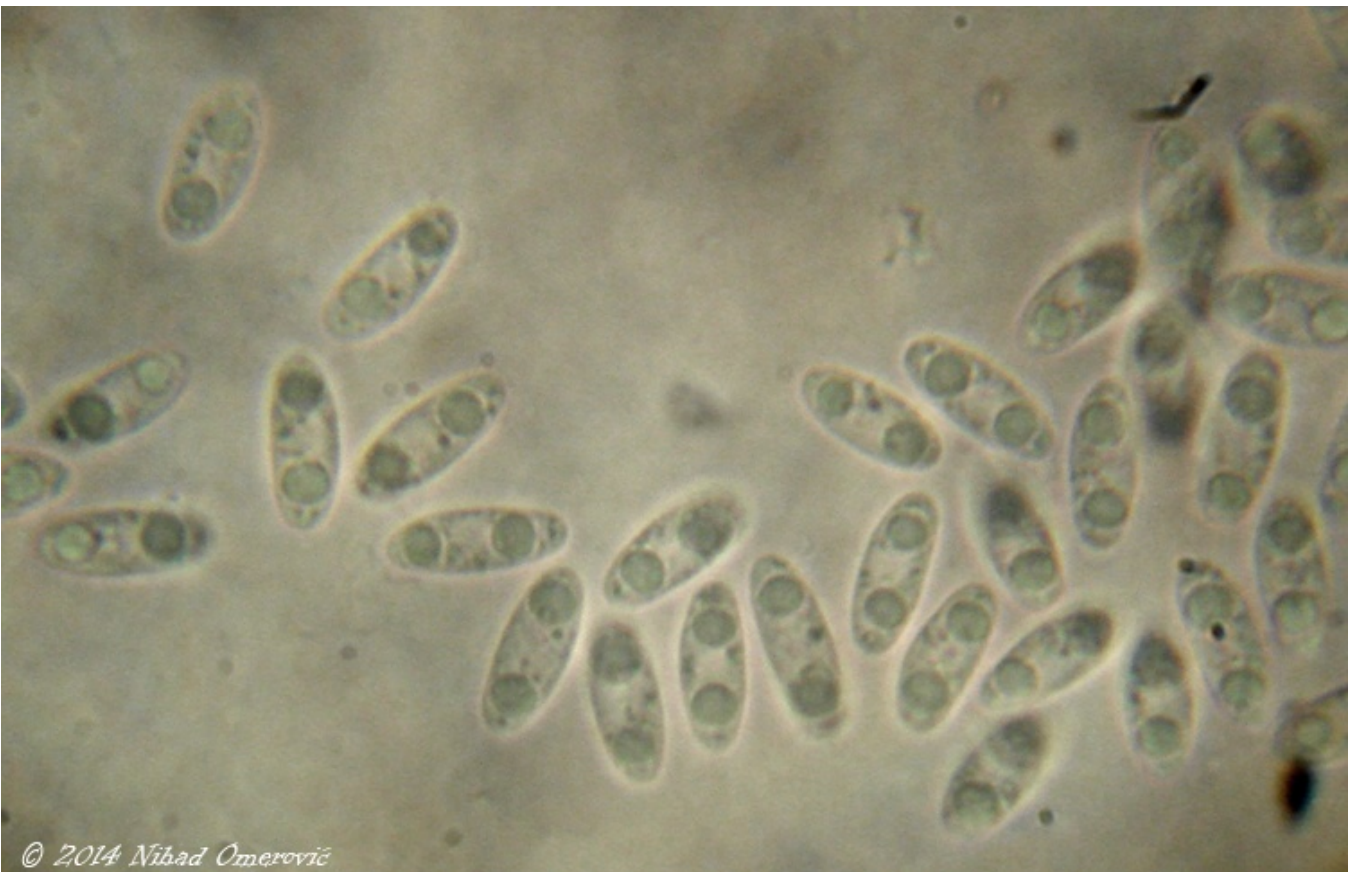
11.7 [12.5 ; 12.8] 13.7 x 4.5 [4.9 ; 5.1] 5.4  $\mu\text{m}$

Q = 2.3 [2.5 ; 2.6] 2.8 ; N = 30 ; C = 95%

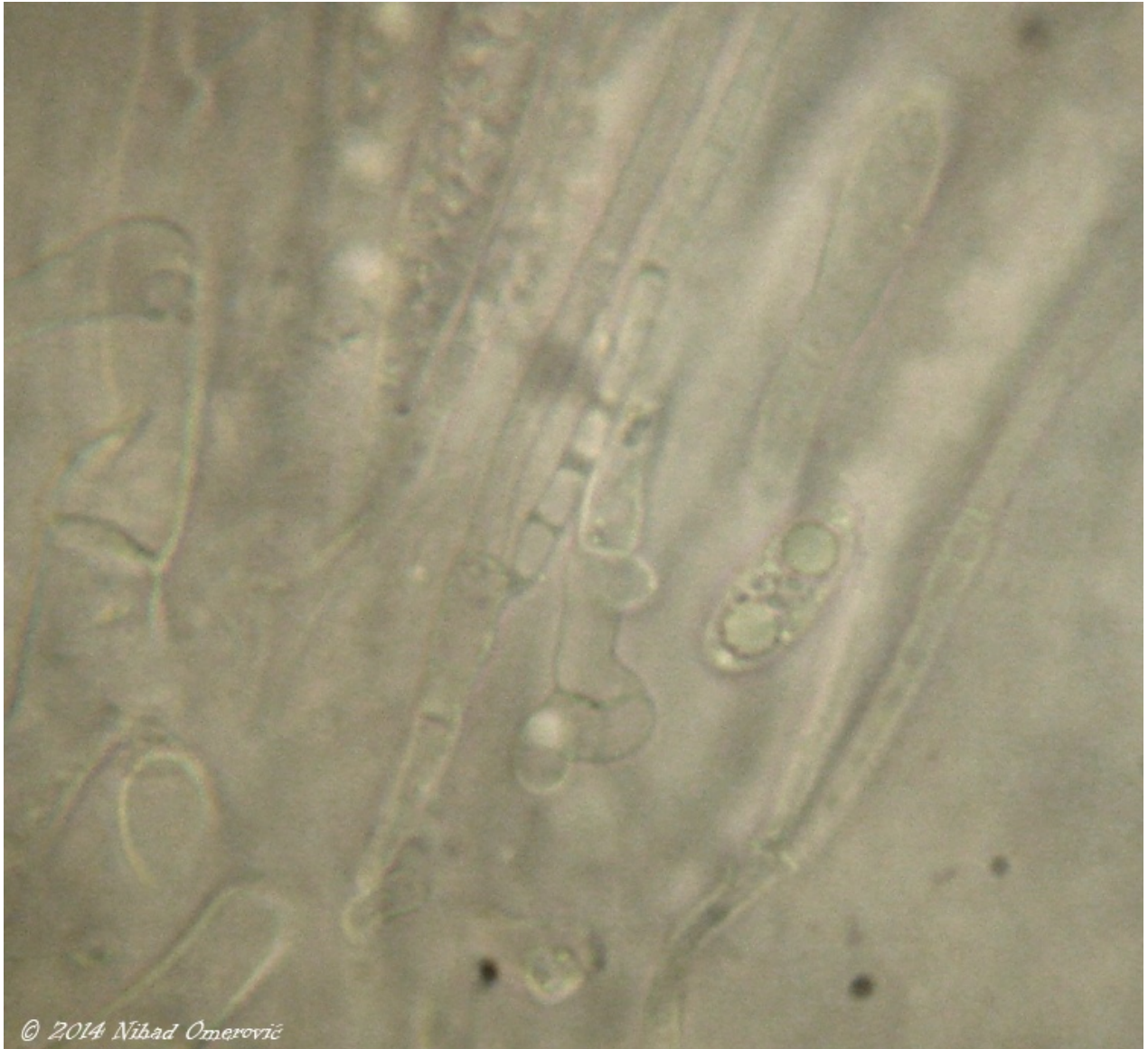
Me = 12.7 x 5  $\mu\text{m}$  ; Qe = 2.6

Asci

Me = 112.7 x 9.5  $\mu\text{m}$  ; Qe = 11.9







© 2014 Nihad Omerović



© 2014 Nihad Omerović