

10. *Sphæria carbonaria*. n. s.

Crowded, globose, semi-immersed, having an obtuse rugulose ostiolum, clothed at the base with branched septate hyaline threads; asci cylindrical, commonly truncate at the apex; sporidia almond-shape, dark-brown, with a very short hyaline tail, uniseriate; paraphyses linear. Sporid. $\cdot 0009 \times \cdot 0003$.

On burnt ground, near Shrewsbury, 1873.

This appears to be allied to *S. rotula*, Cooke.

Plate 25, fig. 3. *a.* perithecia in the ground, magnified; *b.* asci and paraphyses; *c.* sporidia; *d.* mycelium clothing the base of the perithecia.

11. *Sphærella Iridis*. *Gon. & Rabh.* Myc. Eur. t. 5. f. 71.

Amphiginous, black, at first covered by the epidermis, then somewhat free, scattered, depresso-globose, pierced with a simple minute pore; asci obovate-oblong, attenuated at the base into a short stem, sporidia 8, subtriseriate, oblong, rounded at the ends, straight, uniseptate, not constricted at the septum, epispore thick, $17 \times 4\text{--}5$ mic.

On dead leaves of *Iris pseudacorus*. Near Shrewsbury, Nov. 1873.

12. *Sphæria (Delitschia) Winteri*. n. s.

Perithecia immersed, spherical, black; ostiolum elongated, cylindrical, tuberculose, rugulose, frequently somewhat curved; asci cylindrical, octosporous. Sporidia involved in mucus, uniseptate, black-brown, elliptical.

On rabbits' dung. North Wootton, Dec., 1873.

The perithecia are completely immersed in the matrix, only the tip of the ostiola being visible. The sporidia are at first greenish-yellow, then clear brown, becoming eventually almost black, when young surrounded by a gelatinous envelope, which subsequently disappears. They exhibit a tendency to fall in halves at the septum, $\cdot 003$ in. long by $\cdot 001$ in. wide ($\cdot 062$ m.m. - $\cdot 028$ m.m.).

Dr. George Winter, to whom specimens were submitted, considers it distinct from all its allies, and adds, "it approaches nearest to *D. chaetomoides*, Karst., *Fungi Fennici*. Exs.

Plate 25. *a.* perithecia enlarged; *b.* ascus and sporidia; *c.* three sporidia.

13. *Cucurbitaria Dulcamaræ*. *Fr.* Fockel Symb. Mycol., p. 175,
Fr. S. V. S. p. 391.

Sphæria dulcamaræ, Kunze & Schm., Myc. Heft. i., p. 62.
Sphæriacei Brit. Cent. ii. (inedit.)

On dead stems of *Solanum dulcamara*, in company with a *Hendersonia*, which doubtless bore some connexion with it, as a secondary form of fructification.

King's Lynn, Jan., 1874.

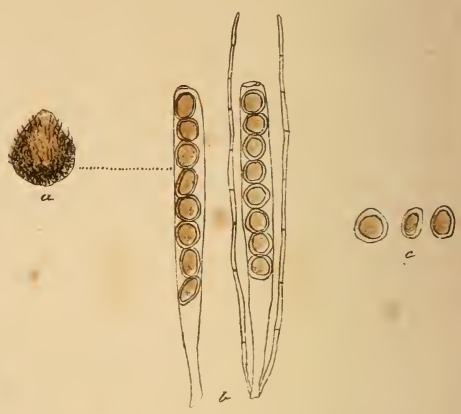
* *Stemonitis pulchella*. *Bab.* Cooke's "Handbook," No. 1160.
Church Stretton, Salop, Dec., 1873.

* *Peziza pustulata*. *Pers.* Cooke's "Handbook," No. 1986.
Sporidia $\cdot 0006 \times \cdot 0003$. Tips of asci bright-blue with iodine.
On charcoal beds, the Wrekin, Salop, 1873.

Plate 24, fig. 2, asci, paraphyses and sporidia, magnified.

1

2



3

