

Spore size:

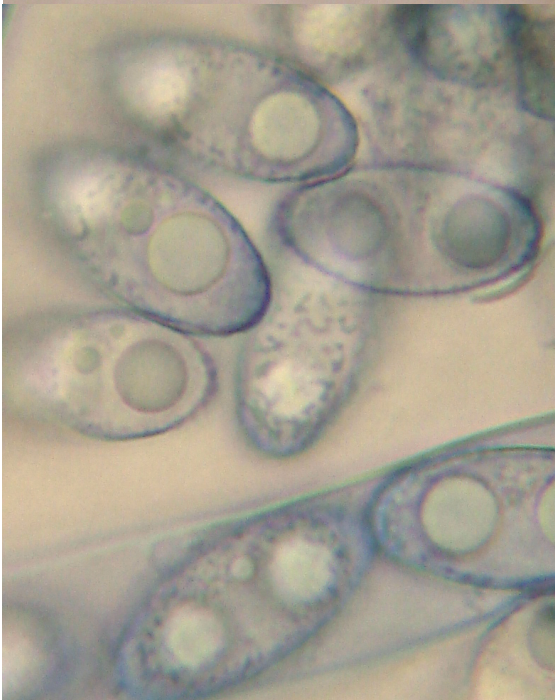
19.4 [19.7 ; 20] 20.3 x 9.1 [9.4 ; 9.6] 10 μm

Me = 19.8 x 9.5 μm ; Qe = 2.1

Spores elongated, biguttulate, ornamented with regularly and irregularly shaped warts, sometimes joined into small ridges; ornamentation more pronounced at poles.



Water



Cotton blue