

Coelo: Coniothyrium [Microsphaeropsis] (olivacea?)?

03II2012

D-BW Heidelberg-Ziegelhausen, Neckarschule

dry, dead twig of a recently fallen branch of *Morus alba* (at -10°C), ass. *Fusarium* spec.

Pycnidia/Conidiomata erumpent, subglobose, blackish, in section poorly separated loculi. Conidiogenous cells short.

Conidia: hyalinous, subovoid/cylindrical 5.4-7.3 x 2.6-3.4 µm

*Fusarium* spec.

erumpent conidiomata of different shape, apricot coloured.

Conidia (mesoconidia?) hyalinous, (0)1-3 septate, 18.5-28(31) x 3.8-4.6 (5.2) µm



Fig. 1 Conidiomata of *Fusarium* and *Coelomyces*

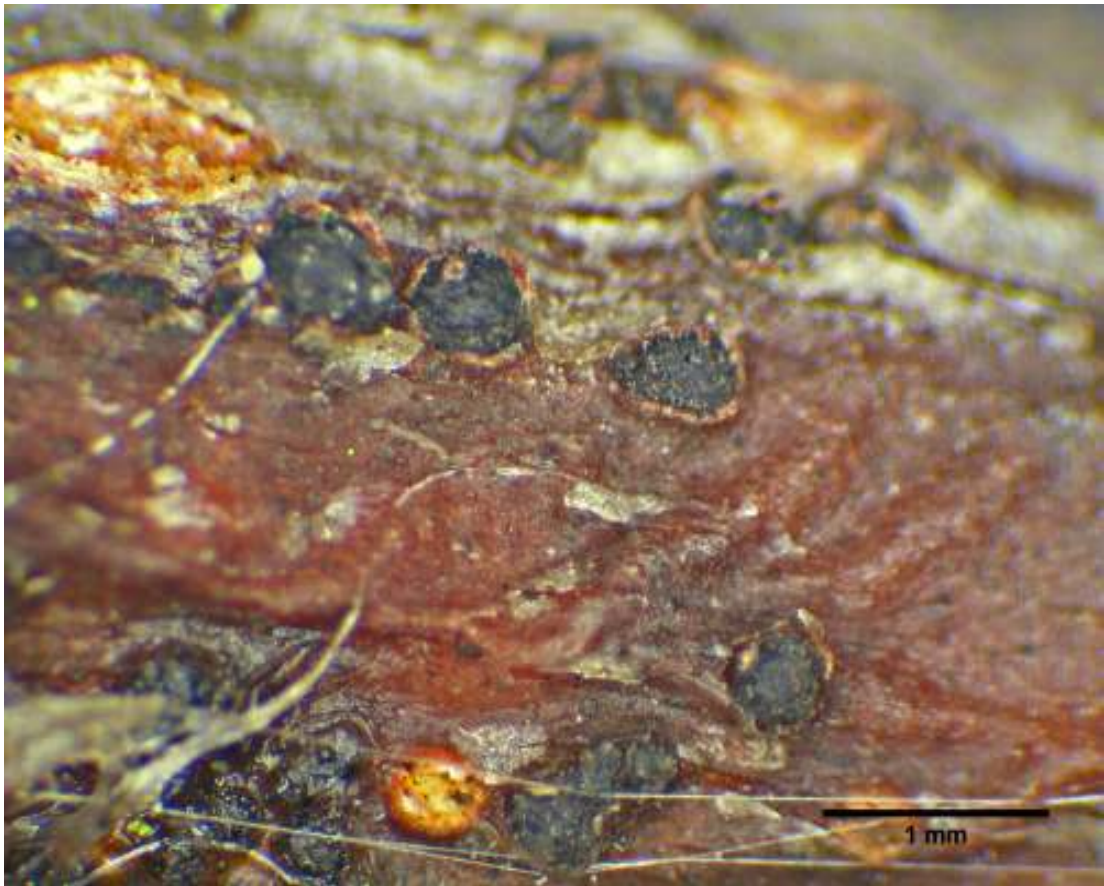


Fig. 2 Conidiomata of Coelomyces



Fig. 3 Section



Fig. 4 Section showing loculi

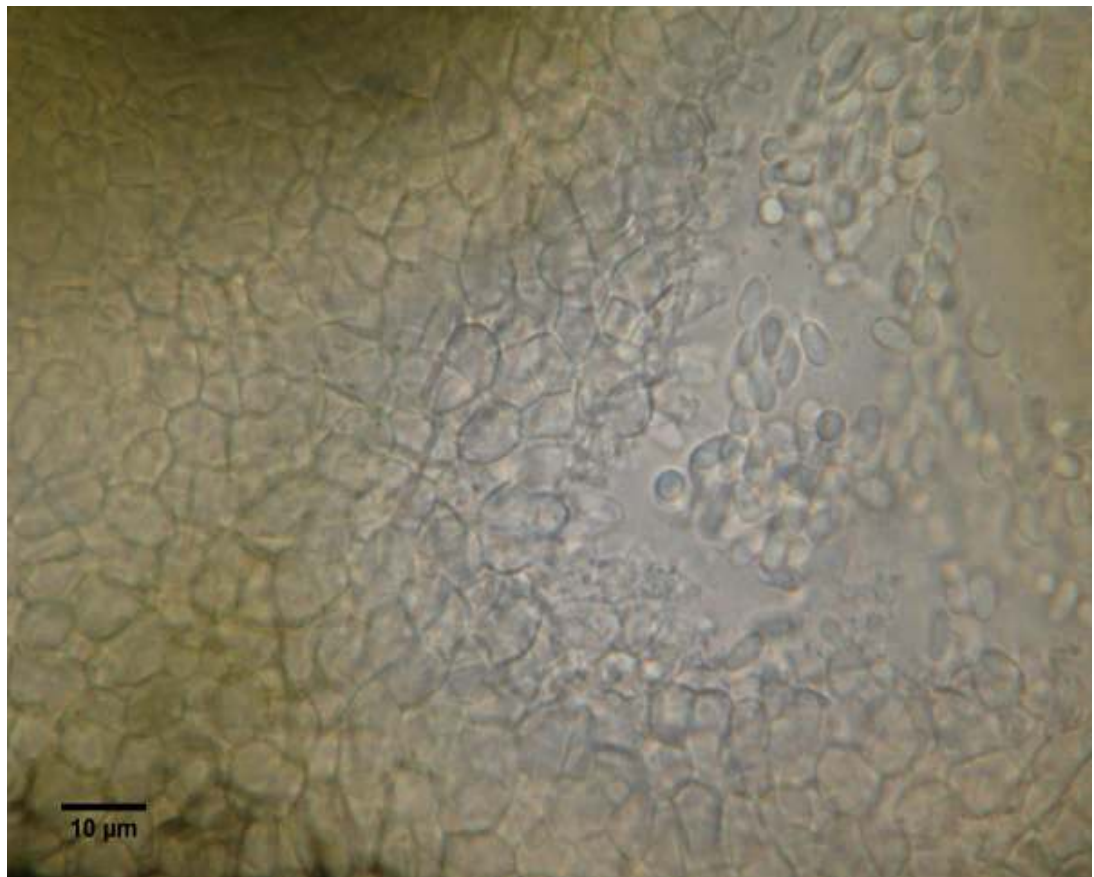


Fig. 5 close view



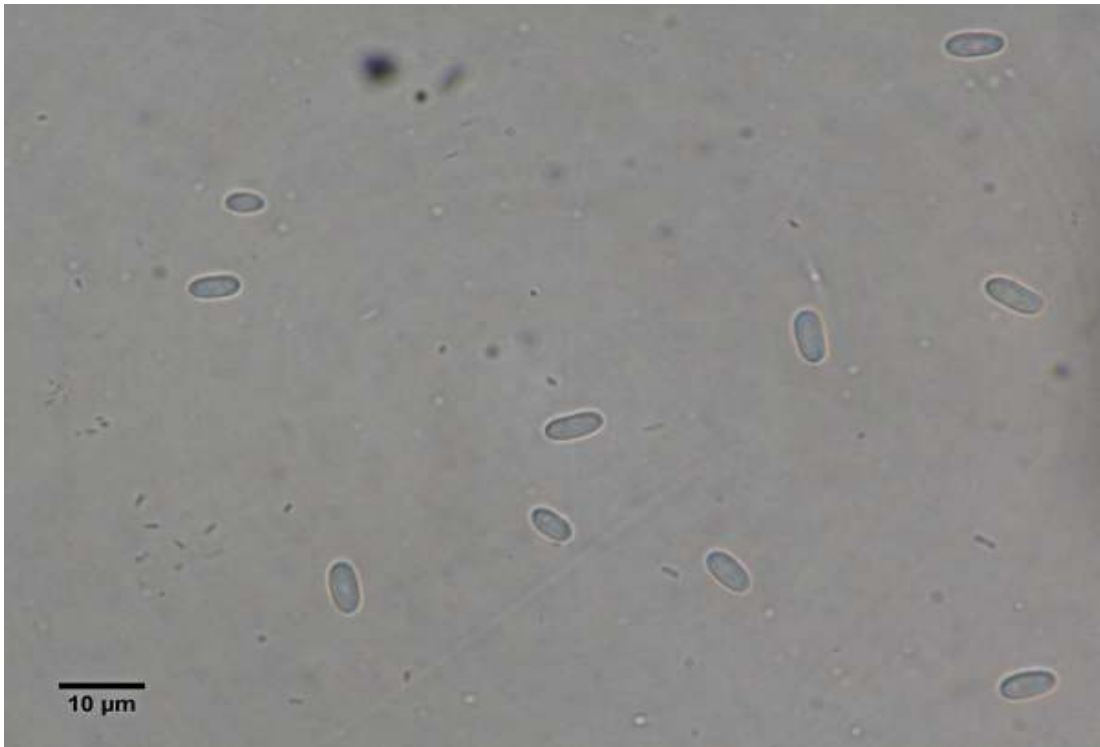


Fig. 6 Conidia



Fig. 7 *Fusarium* spec.



Fig. 8 *Fusarium* spec. section

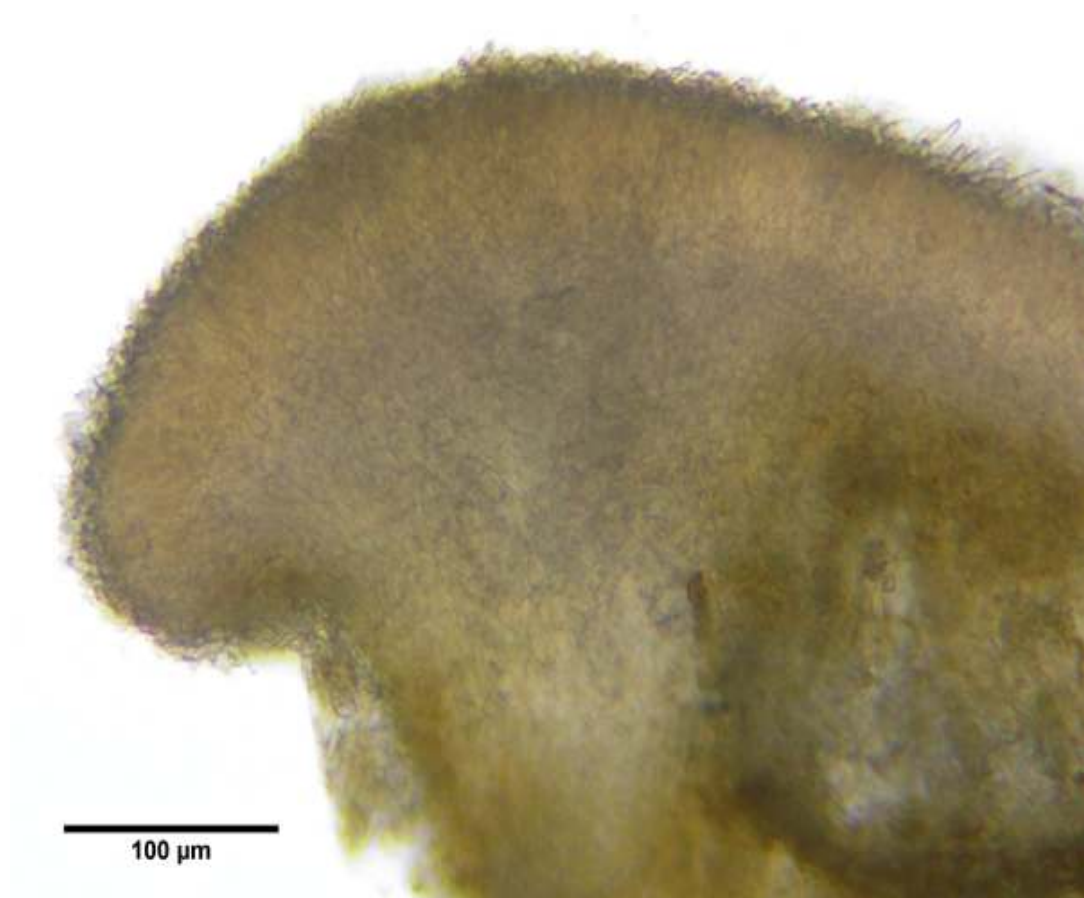


Fig.9 closer view



Fig. 10 *Fusarium* spec. Conidiophores



Fig. 11 Conidia