

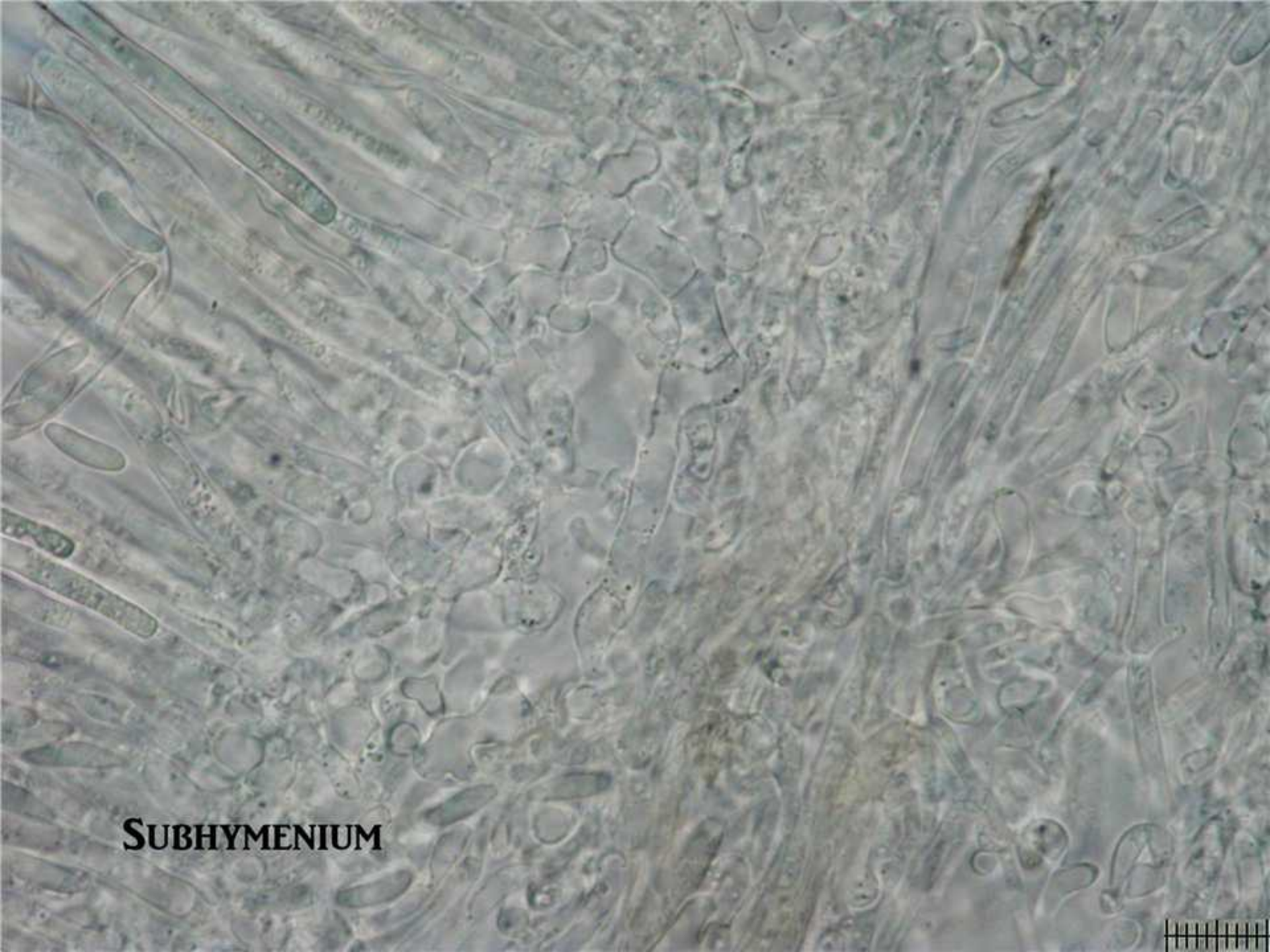
CROZIERS +

CROZIERS +









SUBHYMENTUM



ASCI TIPS IN IKI



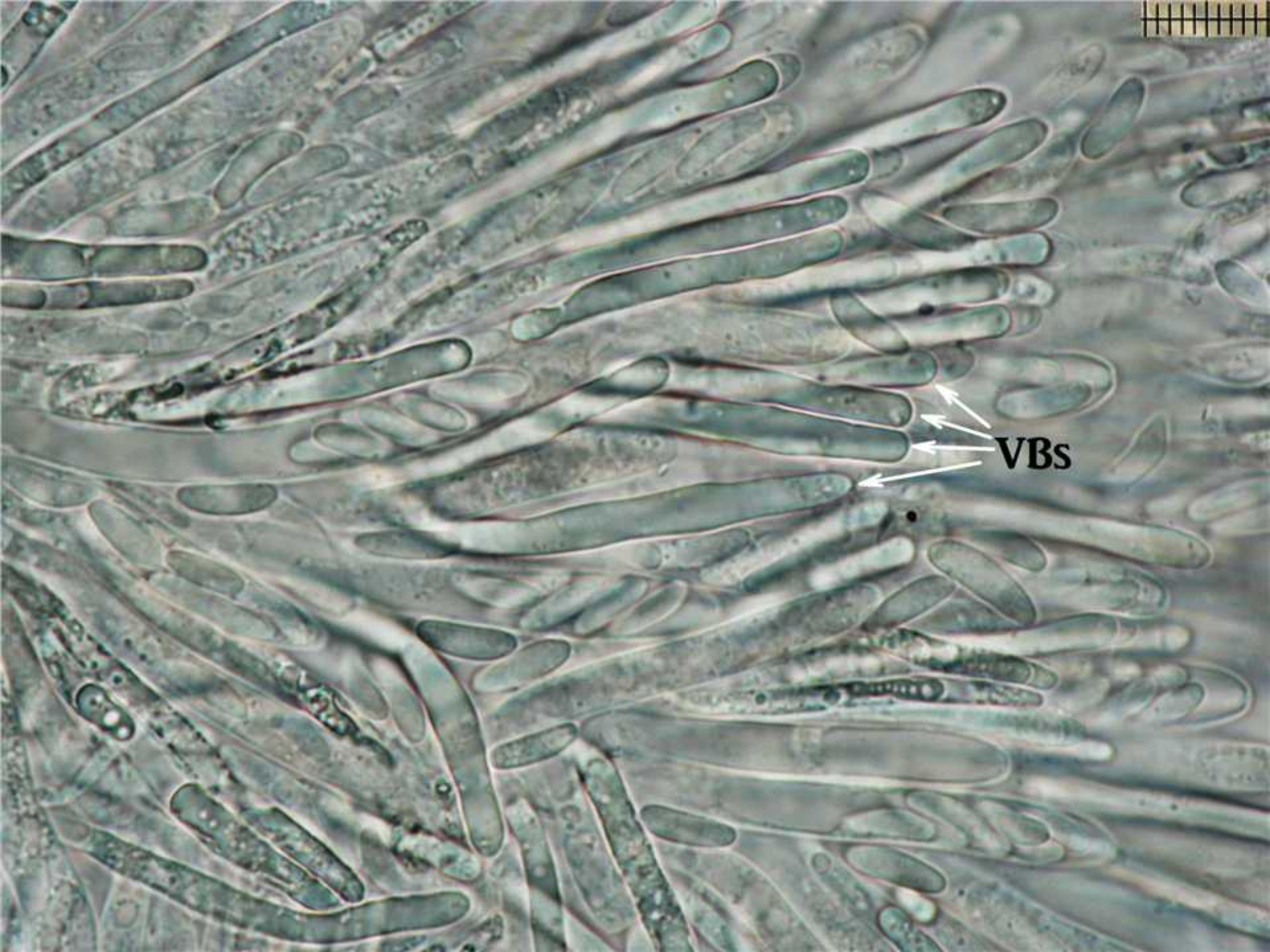


ASCI TIPS IN IKI

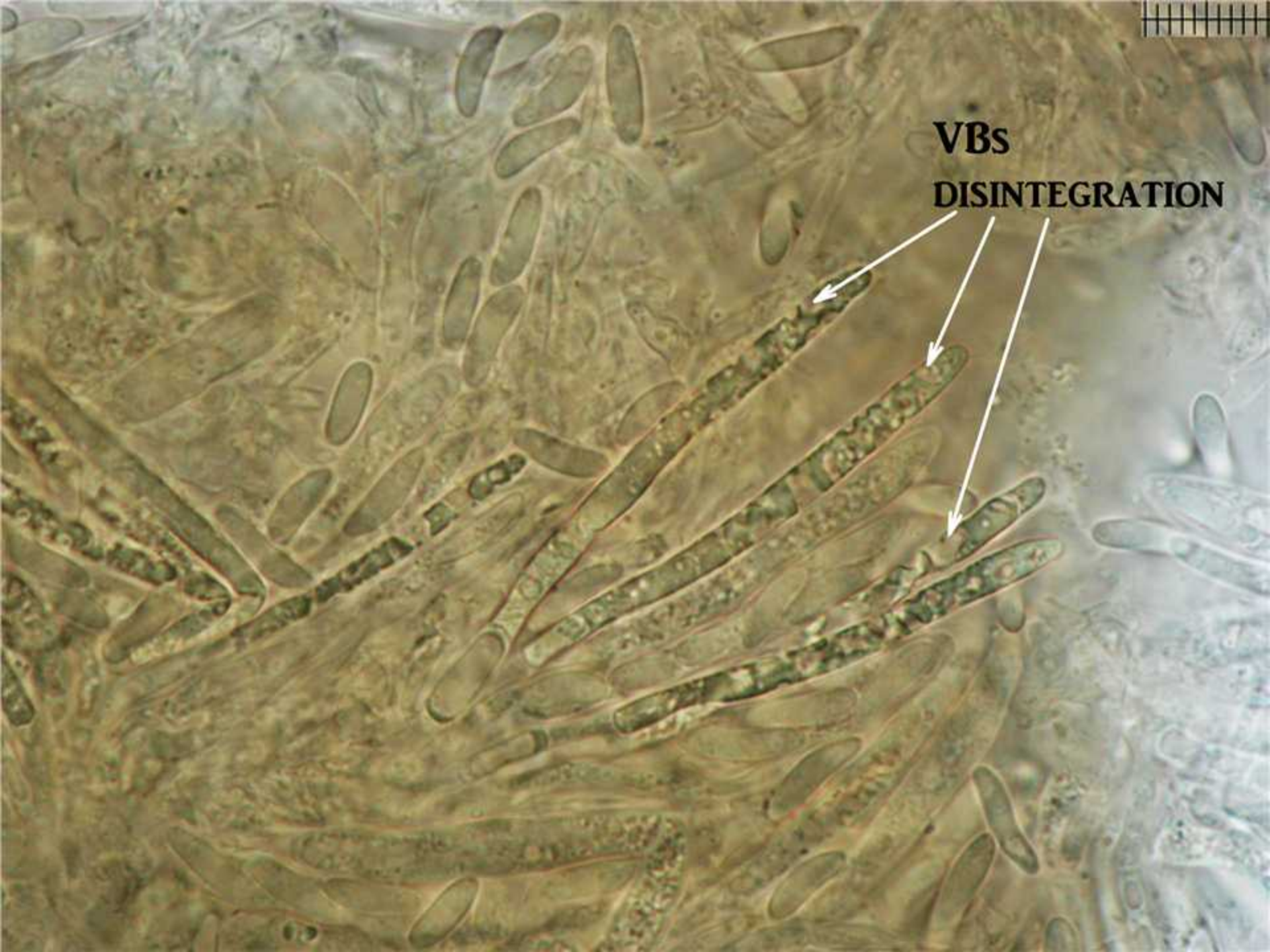


FUSED VBs

VBs BEFORE FUSING



VBs



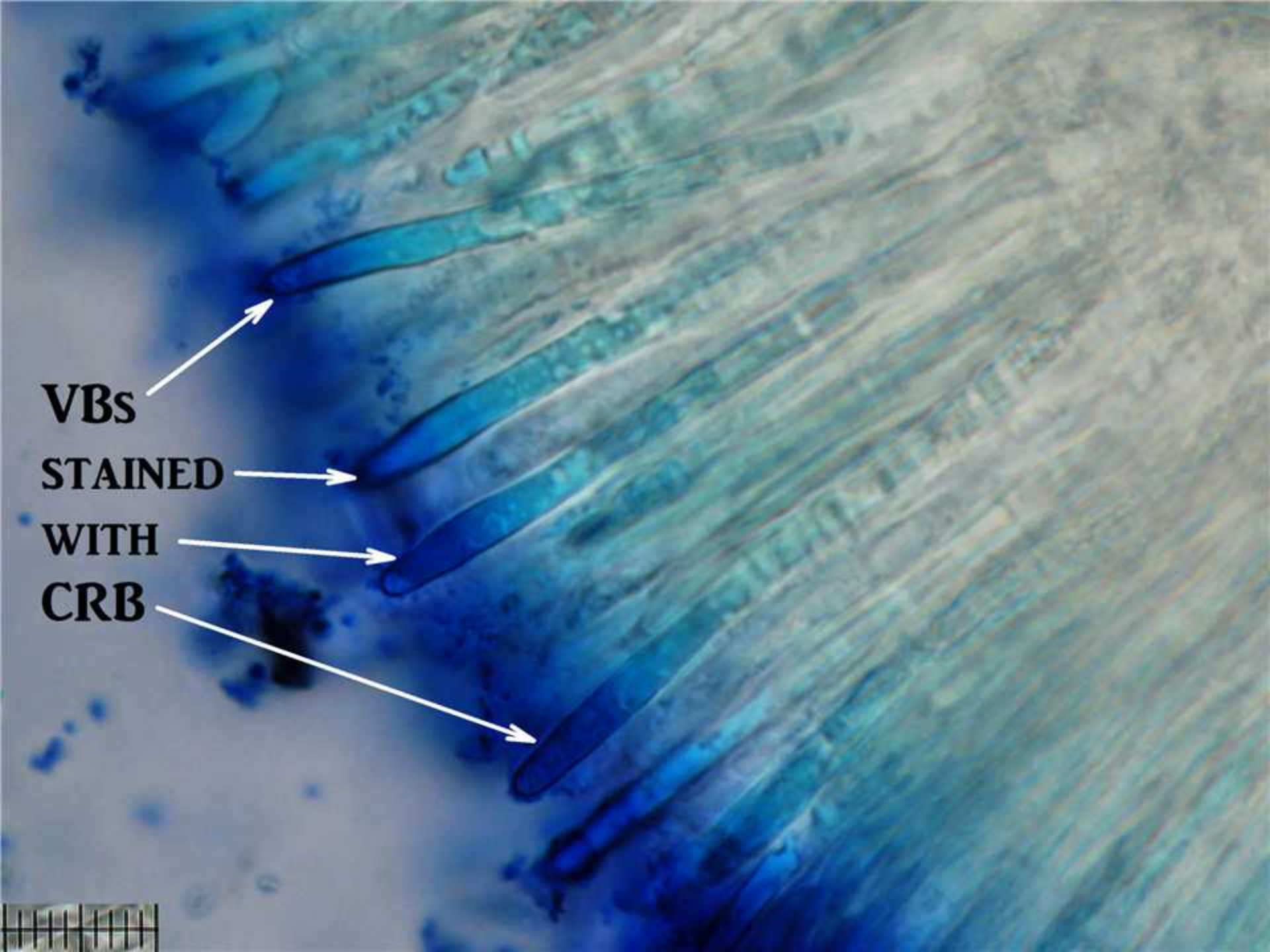
VBs
DISINTEGRATION

VBs

STAINED

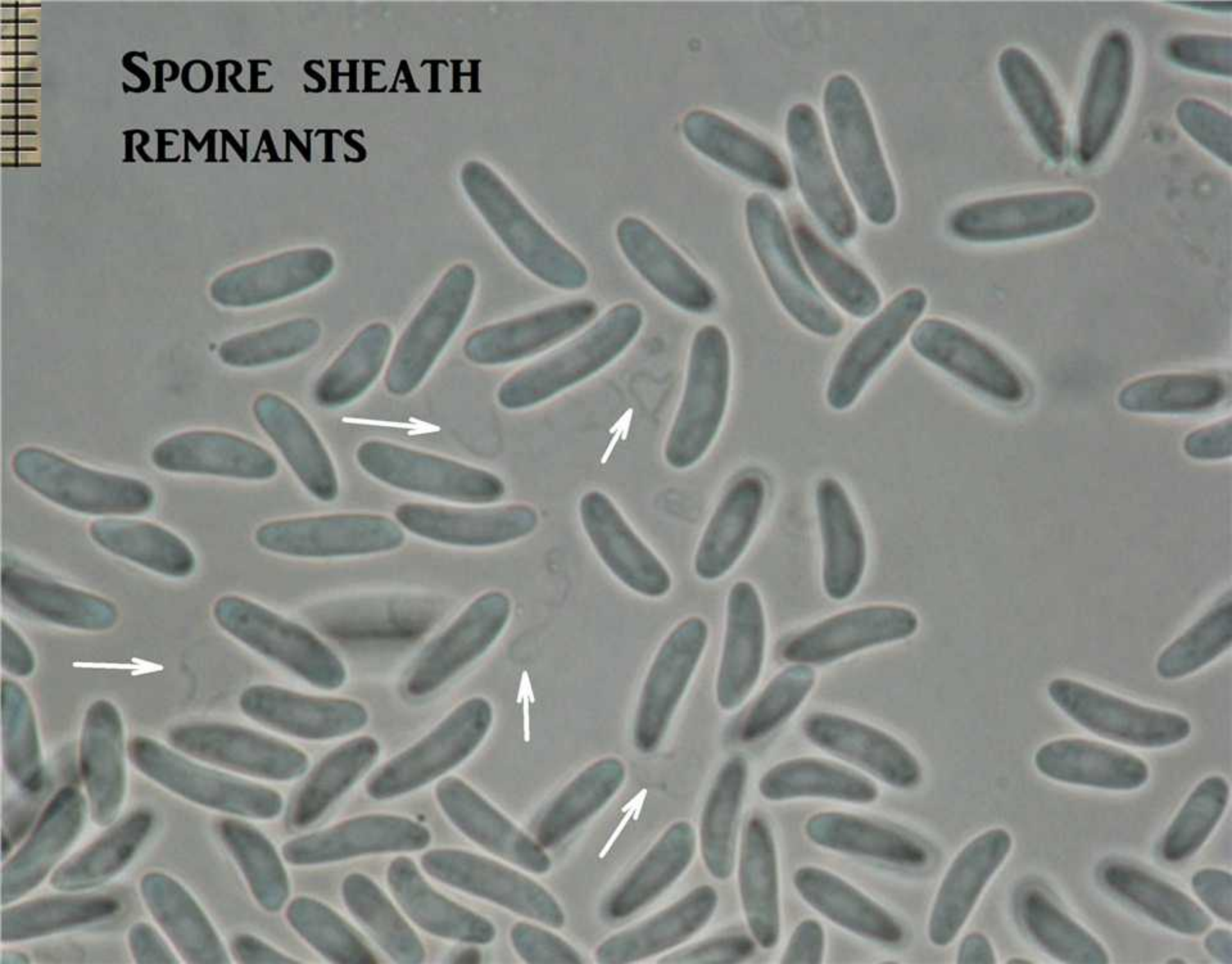
WITH

CRB



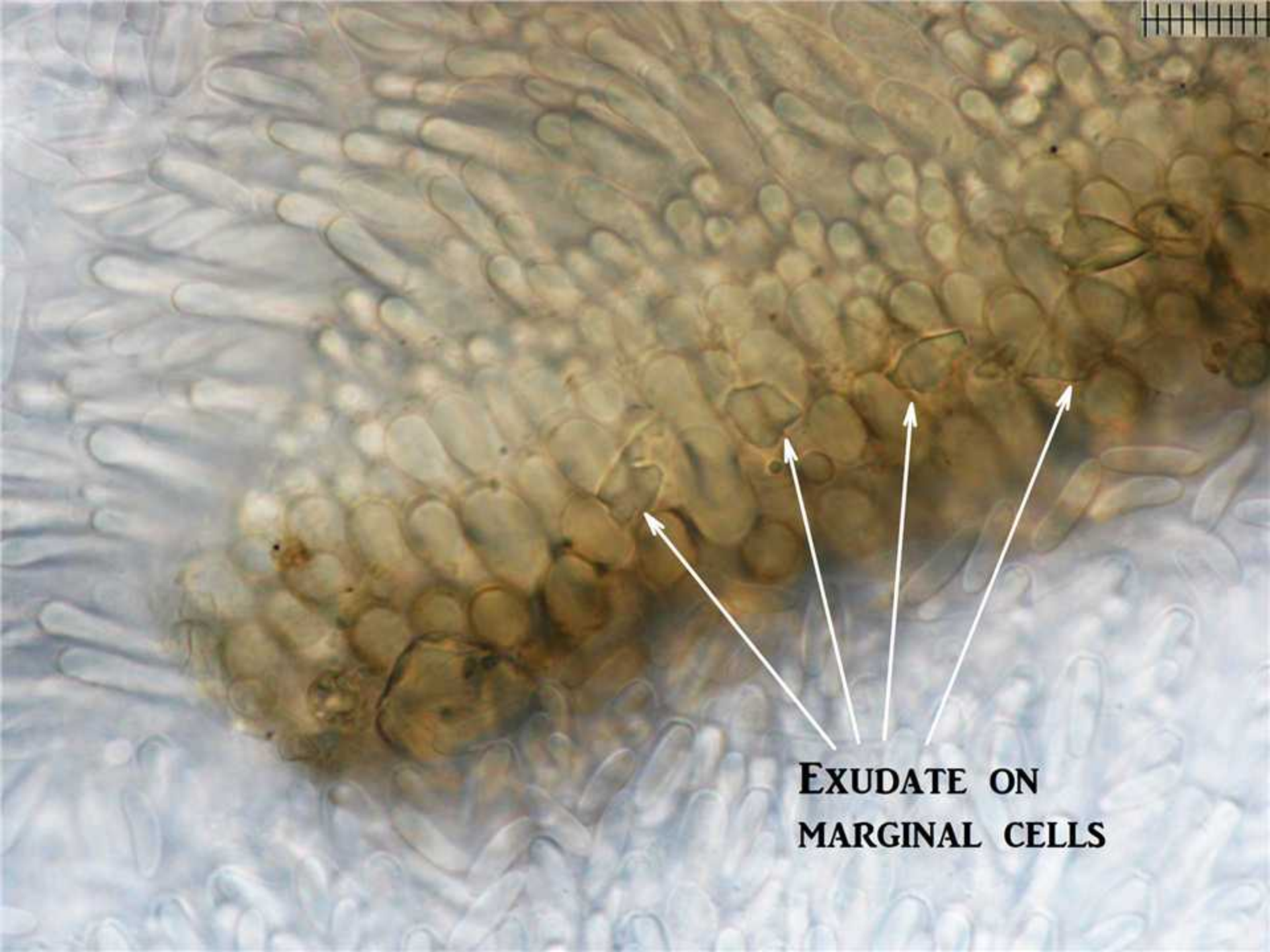


**SPORE SHEATH
REMNANTS**



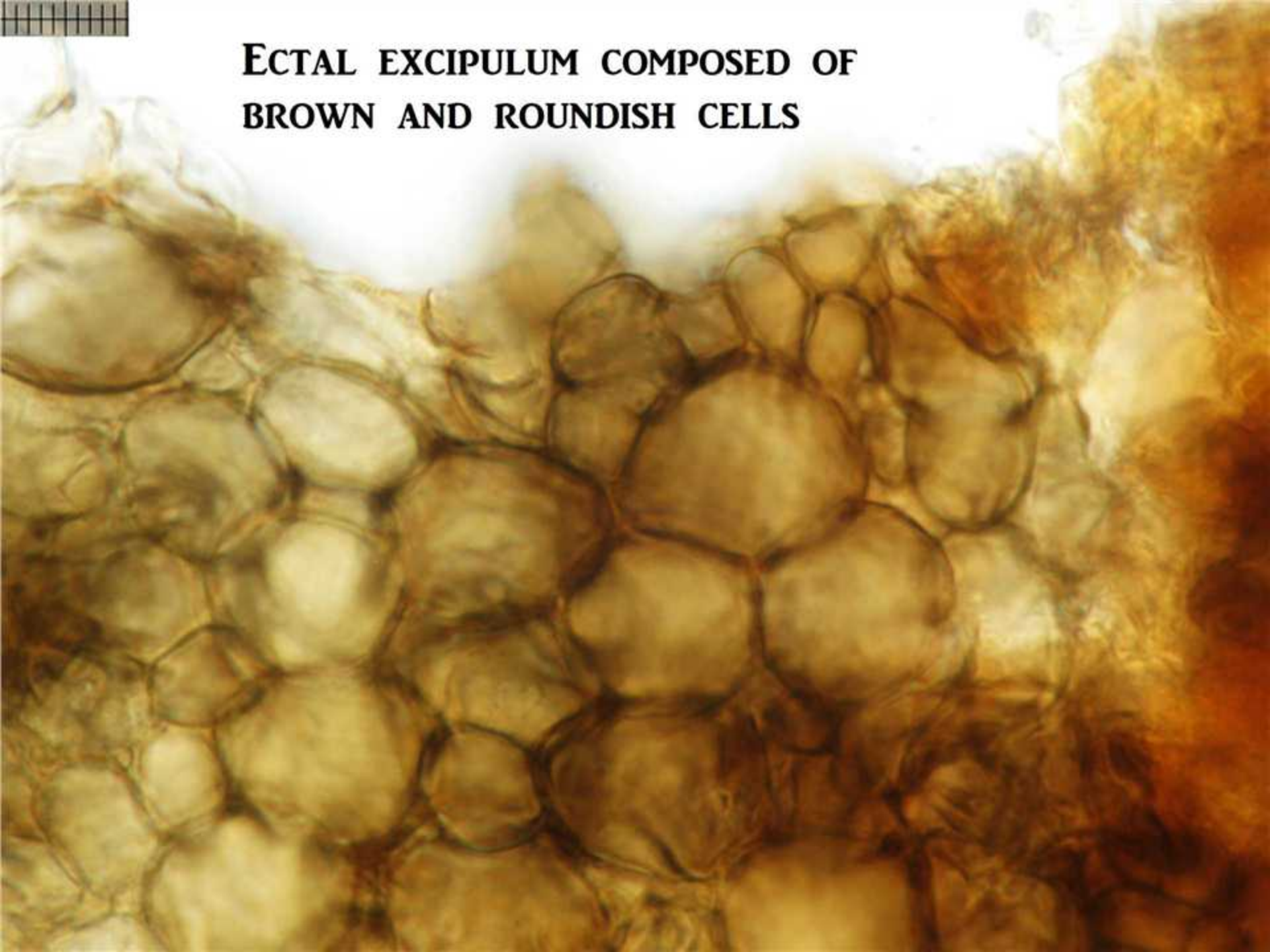


VBS IN MARGINAL CELLS



**EXUDATE ON
MARGINAL CELLS**

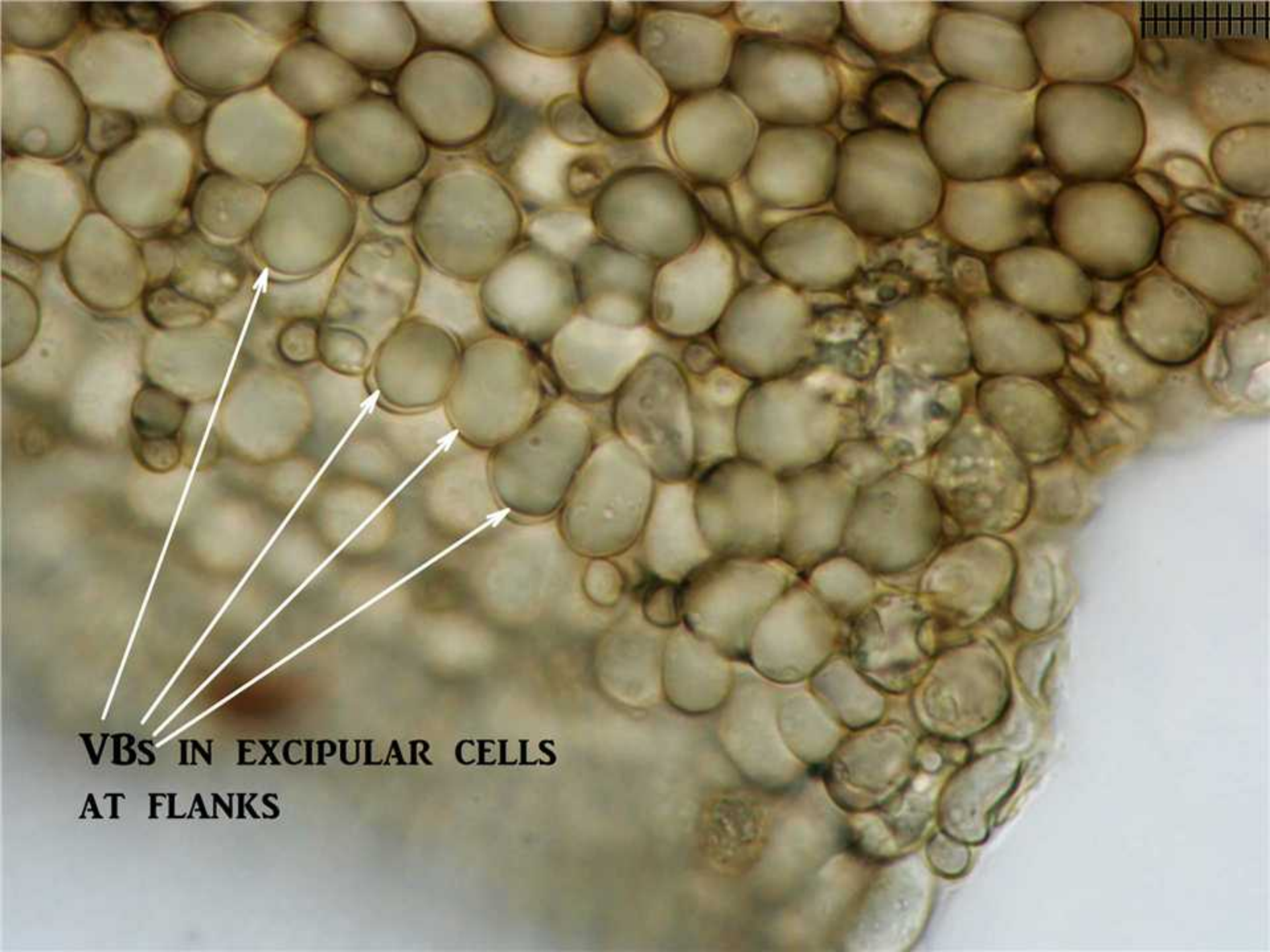
**ECTAL EXCIPULUM COMPOSED OF
BROWN AND ROUNDISH CELLS**



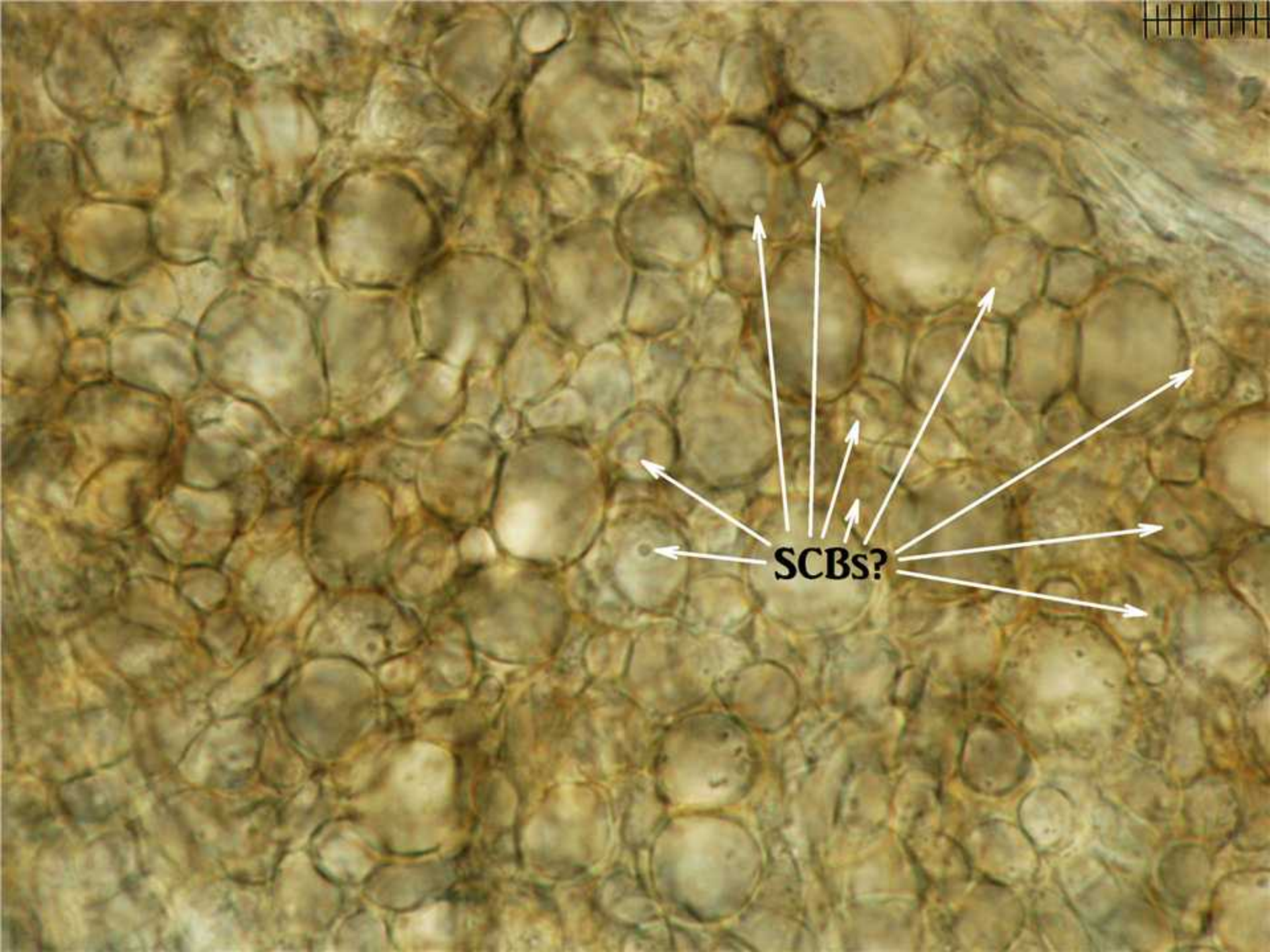


**VBS IN
EXCIPULAR CELLS
AT FLANKS**





**VBS IN EXCIPULAR CELLS
AT FLANKS**



SCBs?

**BASAL ANCHORING
HYPHAE**

