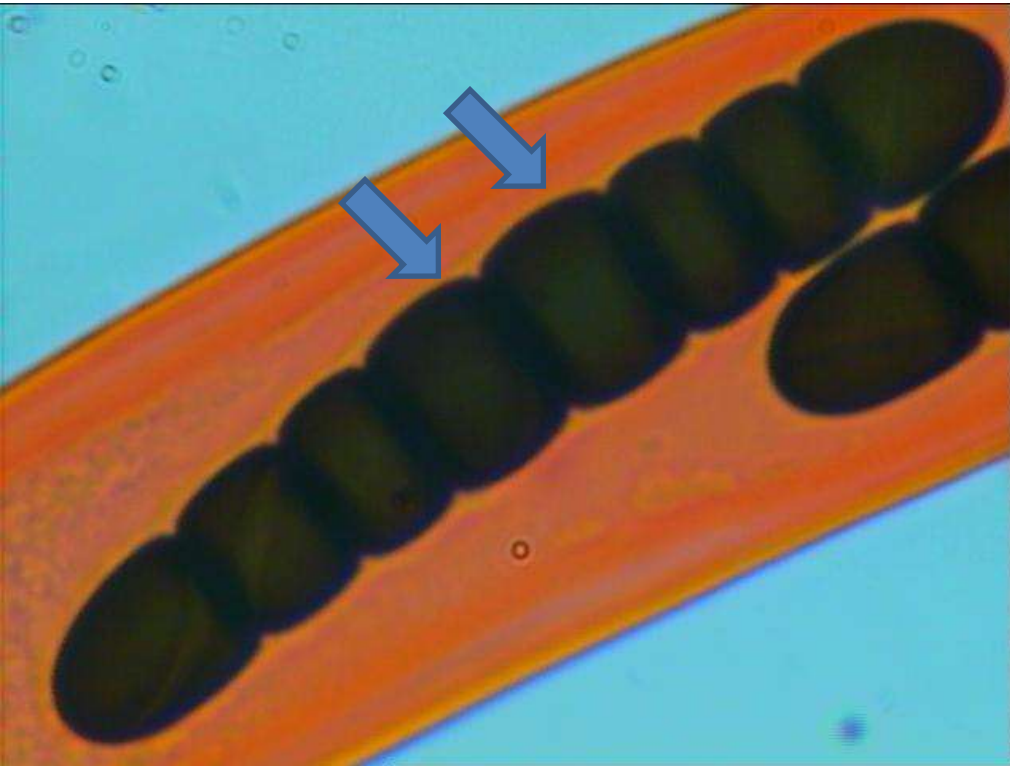


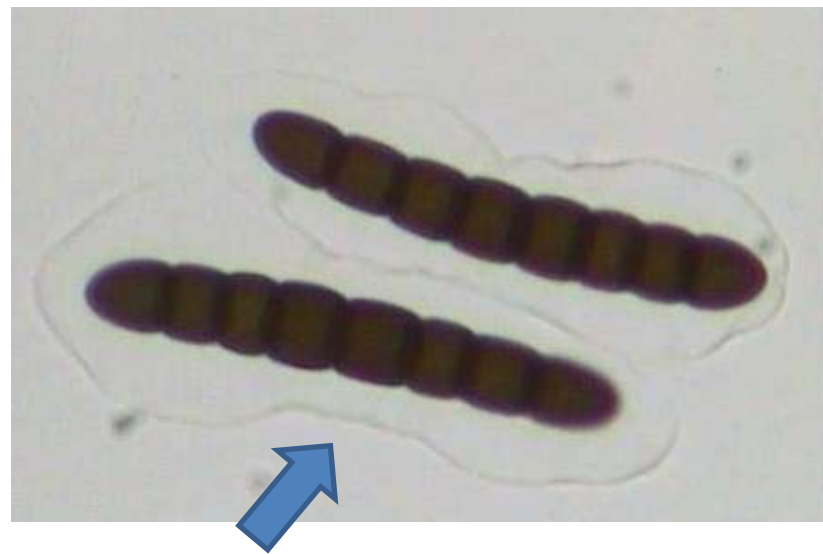
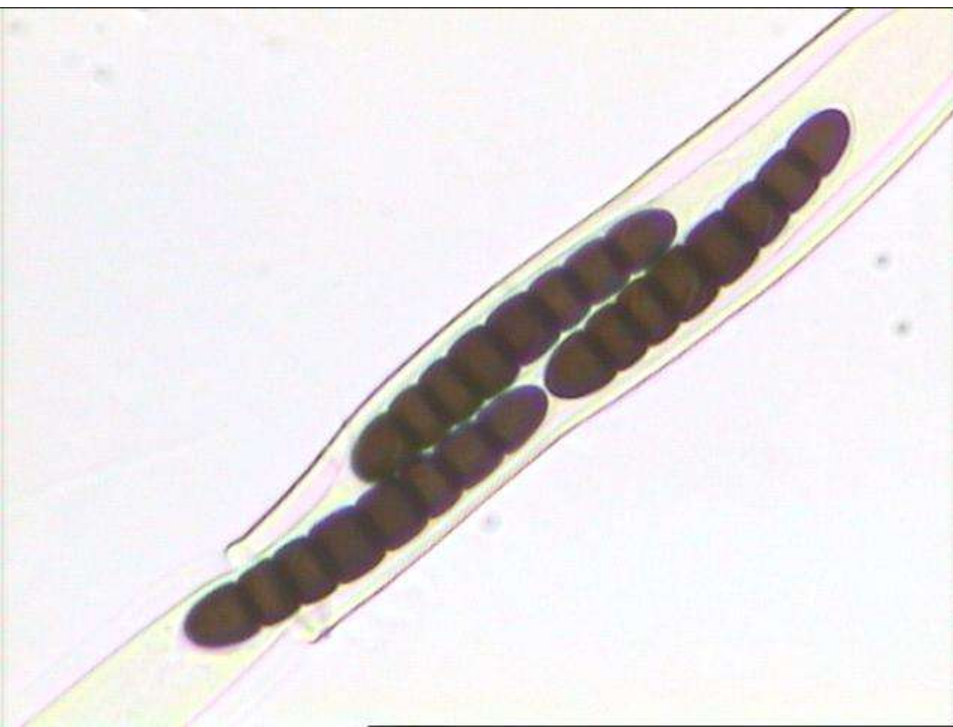
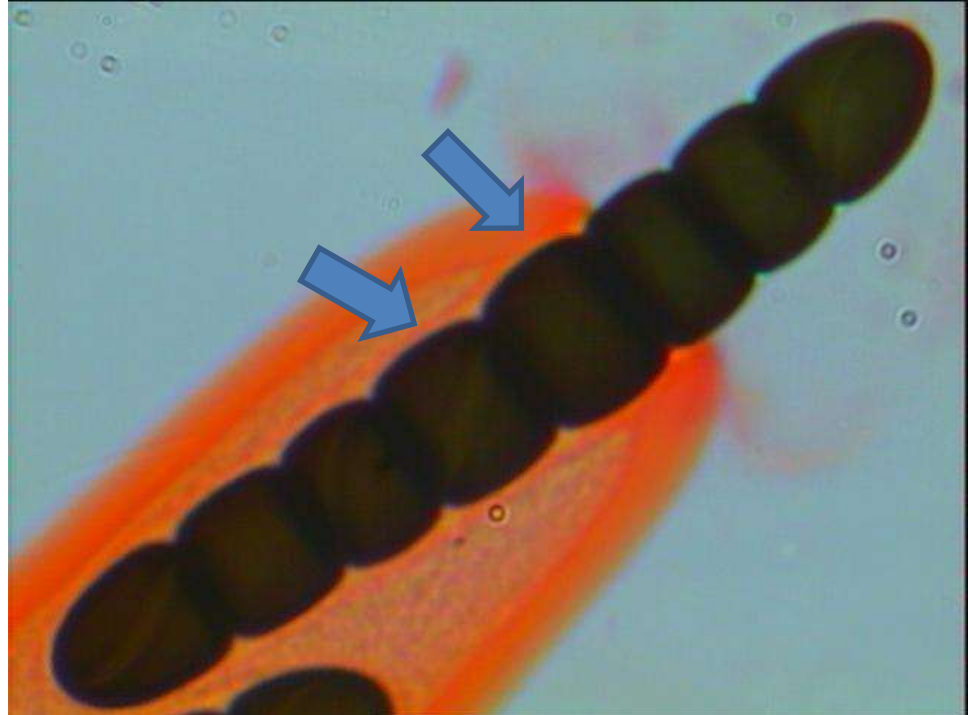
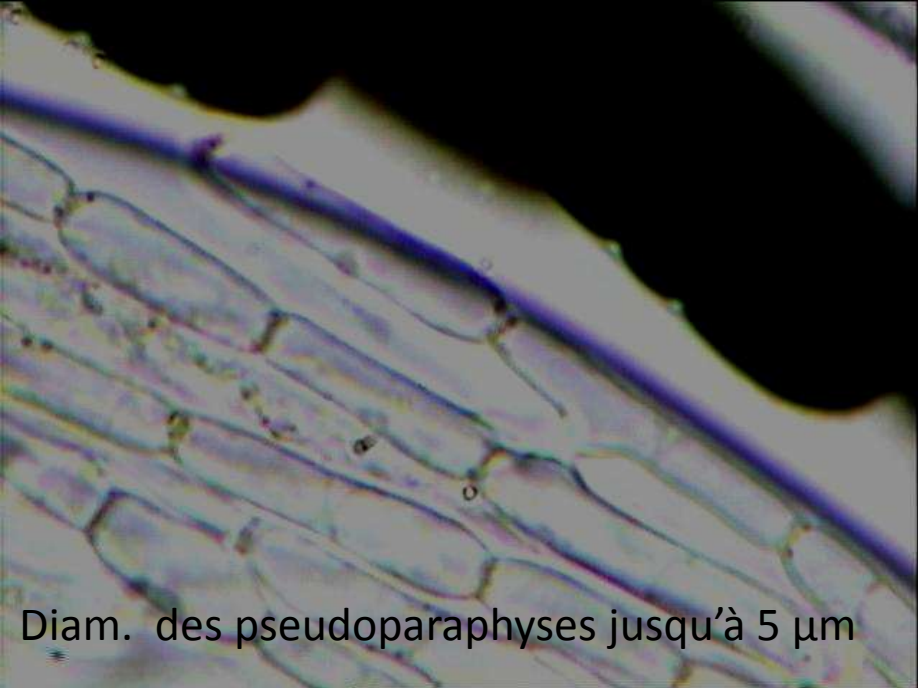
Sporormiella corynespora ?

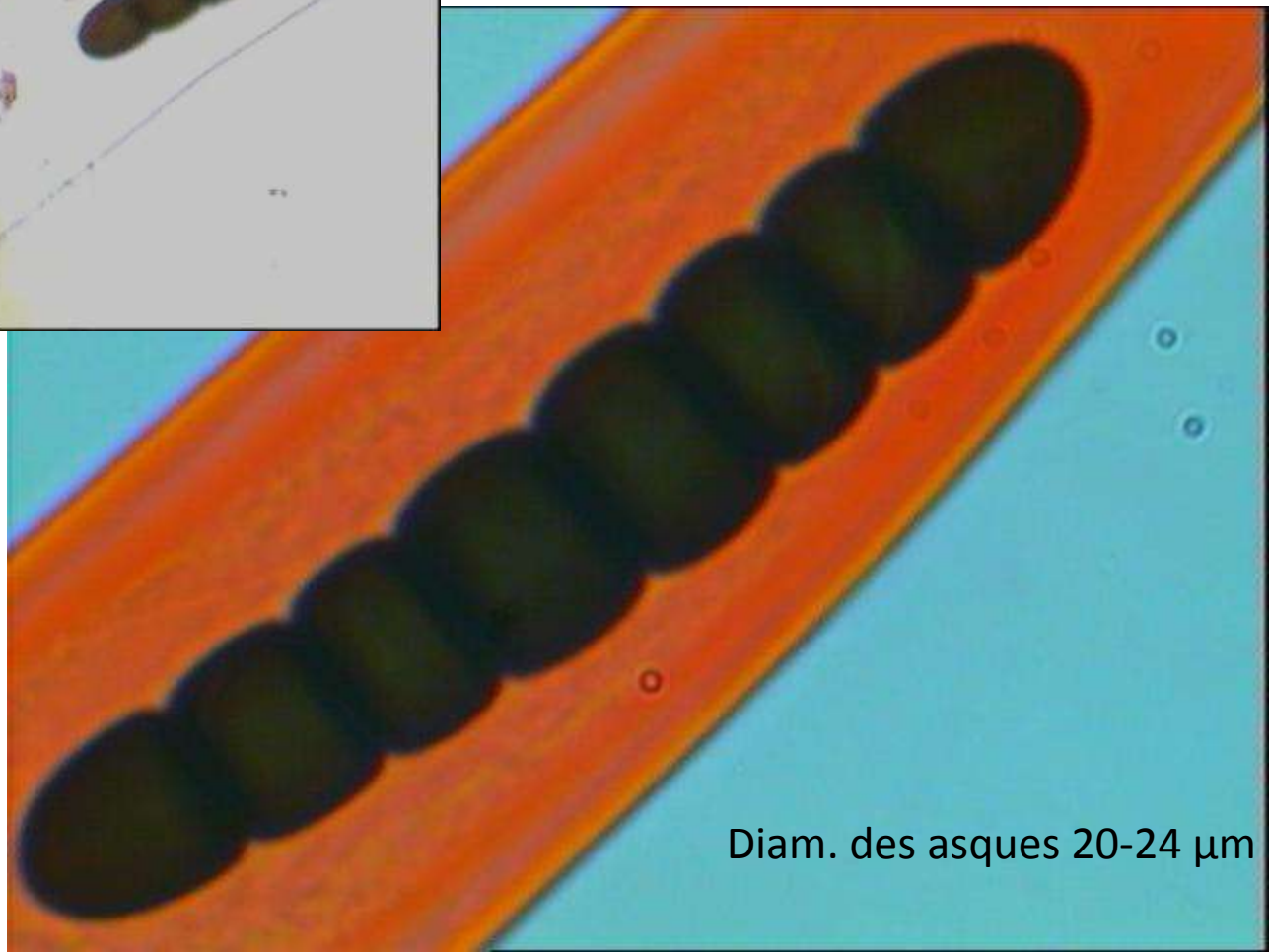
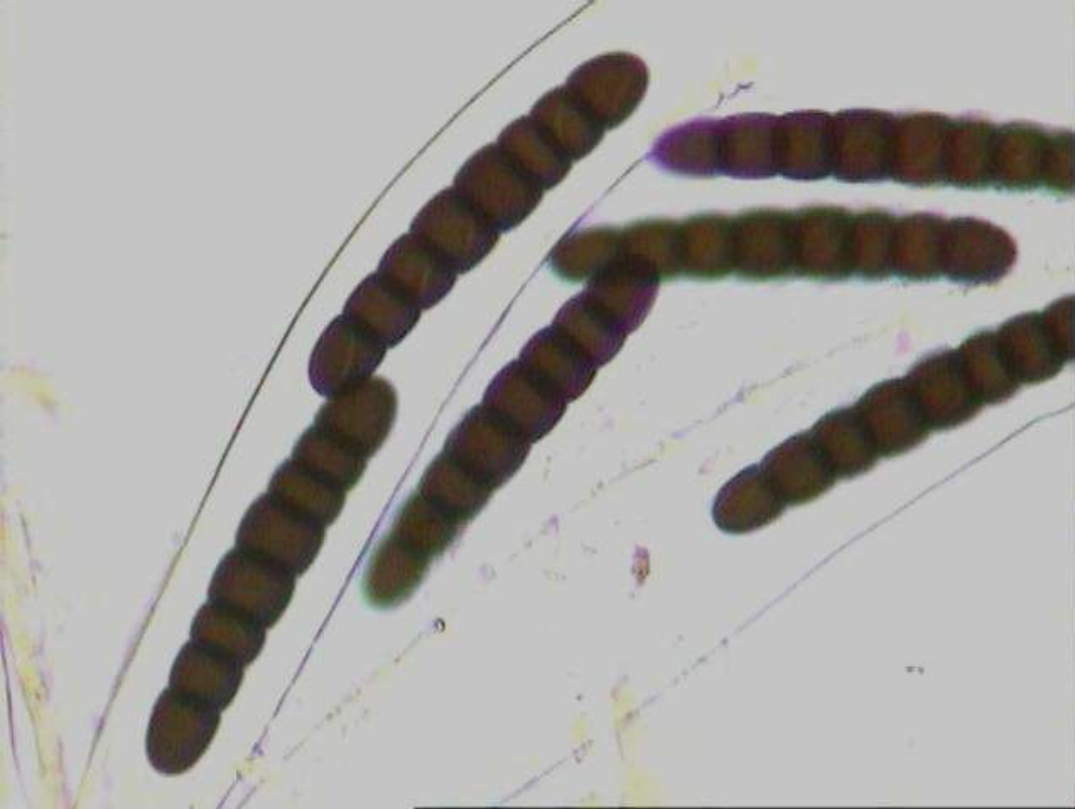
Inventaire du Mercantour (FR) N44,3145-E 6,5949 – Alt. 2000 m. Après le Col d'Allos, vers Barcelonnette . Sur crottes de lièvre. Récolte du 12 mai 09, MC 17 mai 09.

En suivant la clé de Mike ; 11, 22, 23, 24, 26 et 27. En suivant celle de Gabriele & Al. ; 13, 26, 29, 30, 31.



**Spores (8 cellules) 55-59 (62) x 8-9 μm
et 10 μm aux 4^è et 5^è sporidioles**





Diam. des asques 20-24 μm

