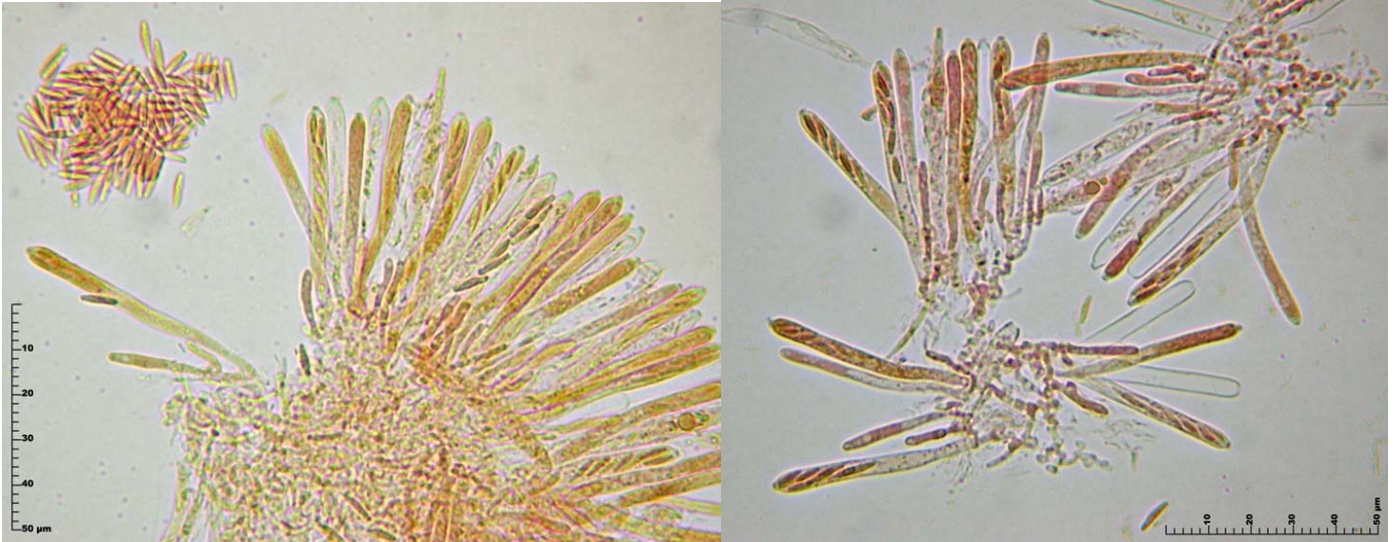
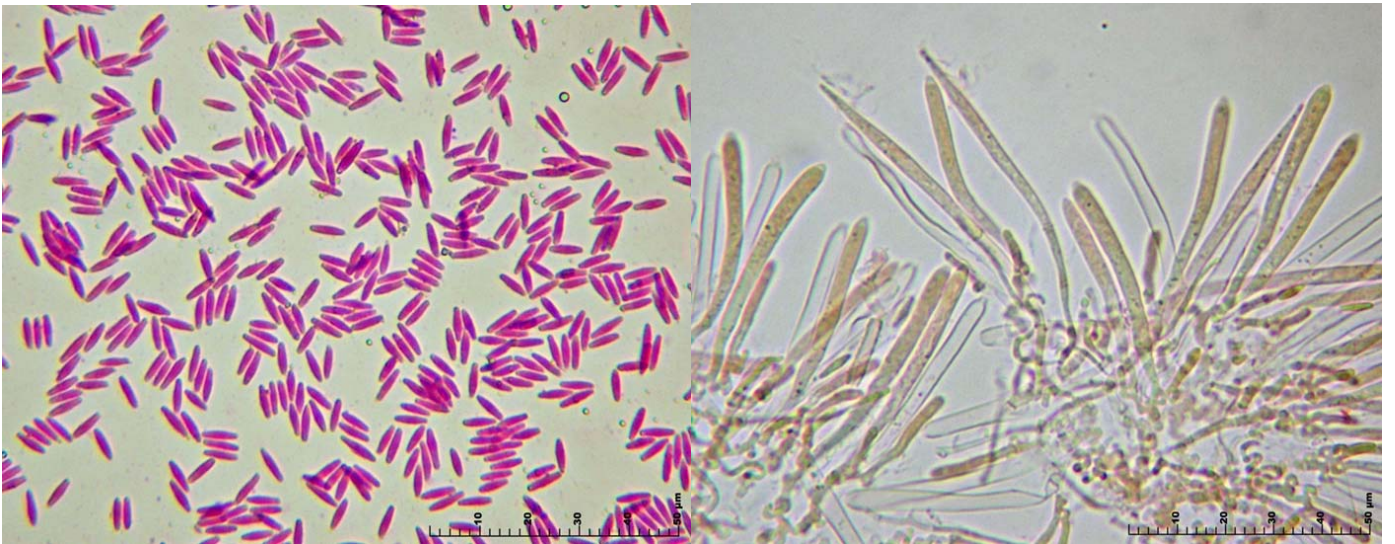


Lachnum aff subvirginum 200607 039



Ascas amiloides (izquierda), con croziers (derecha). Asci IKI+ (left), with croziers (right)



Esporas cilíndrico-fusiformes (izquierda), paráfisis lanceoladas, septadas, más largas que las ascas (derecha). Spores cilíndrico-fusiformis (left), paraphyses lanceolate, septate, projecting beyond the asci (right).

Sporal measures (400x, IKI & floxina B, fresh material)

5.8 [7 ; 7.4] 8.5 x 1.2 [1.5 ; 1.6] 1.9; Q = 3.2 [4.5 ; 5] 6.3 ; N = 45 ; C = 95% ; Me = 7.16 x 1.53 ; Qe = 4.76



Pelos septados, finamente punteados y engrosados en la punta. Hairs septate, finely encrusted and clavate tips.