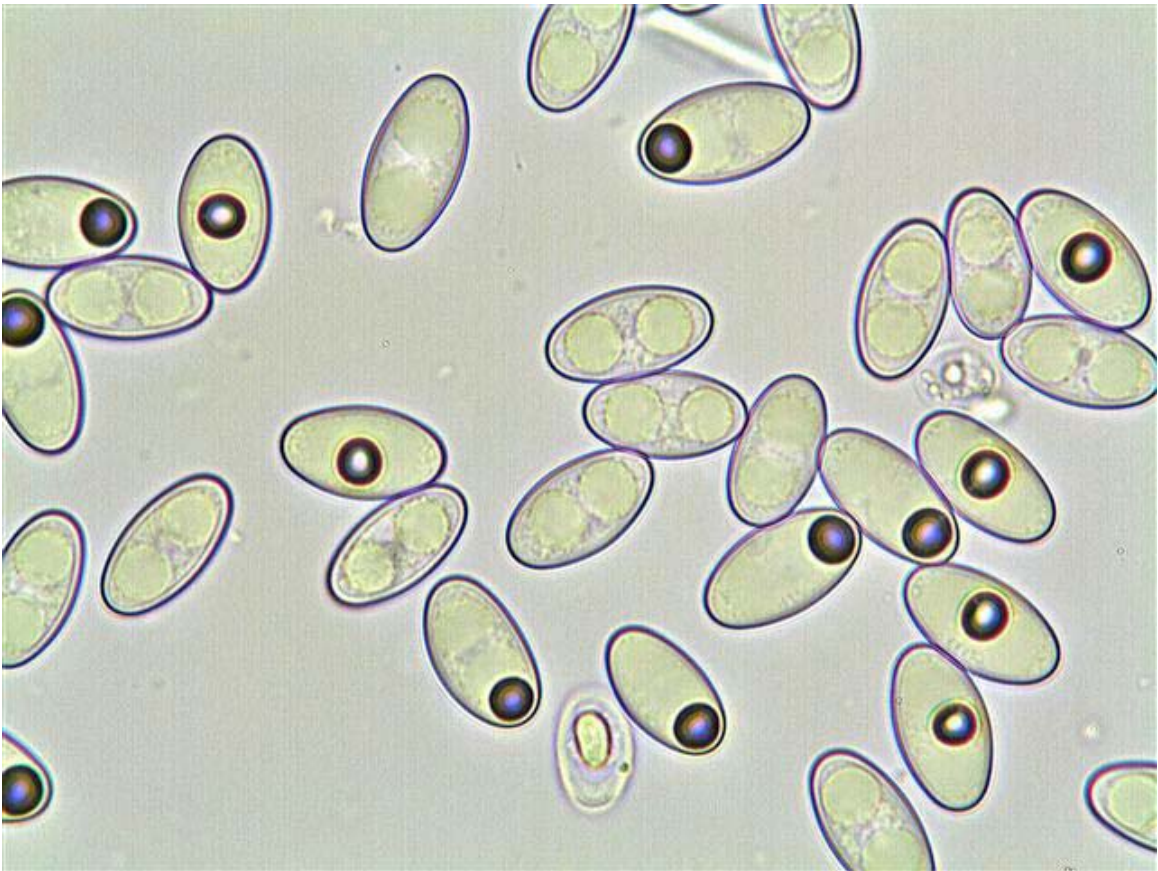


Anthracobia



Sobre el suelo entre restos quemados.



Esporas bigutuladas de 16,4-19 x 8,9-10,8 Q=1,7 (1,8) 2,00



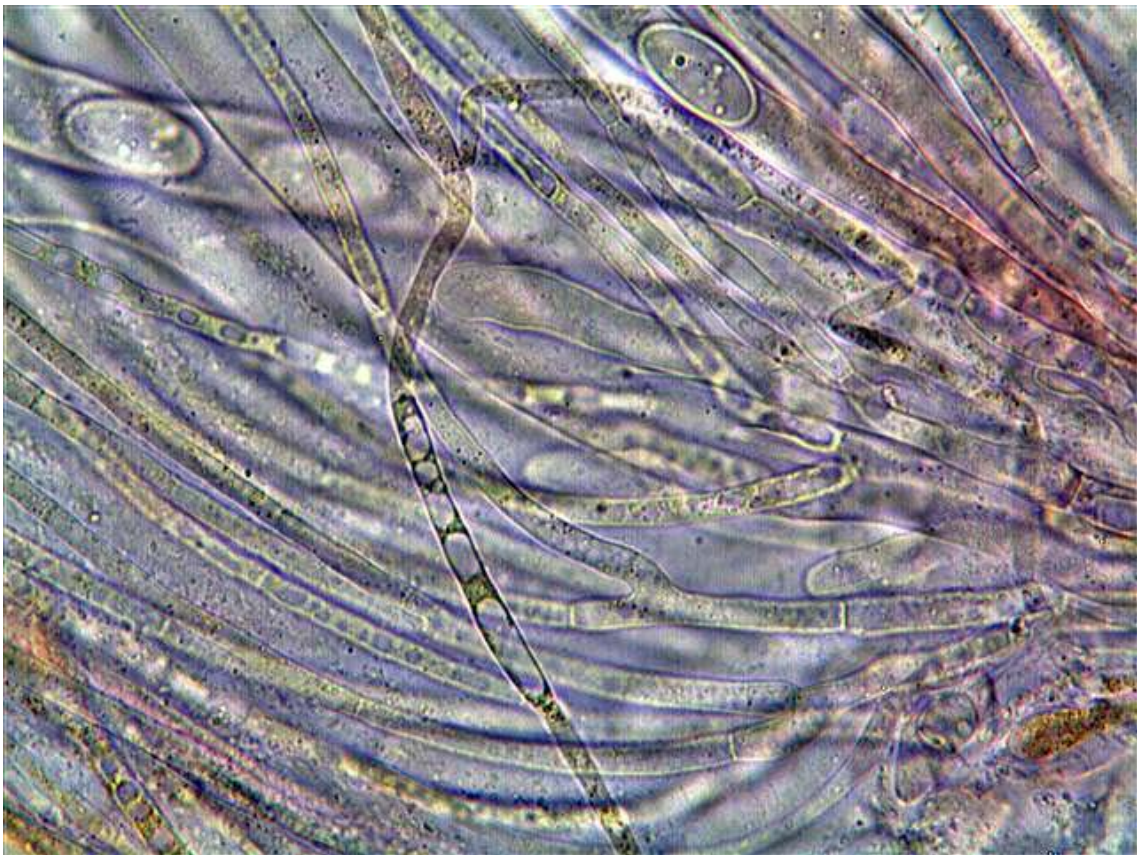
Ascas



Ascas y parafisis



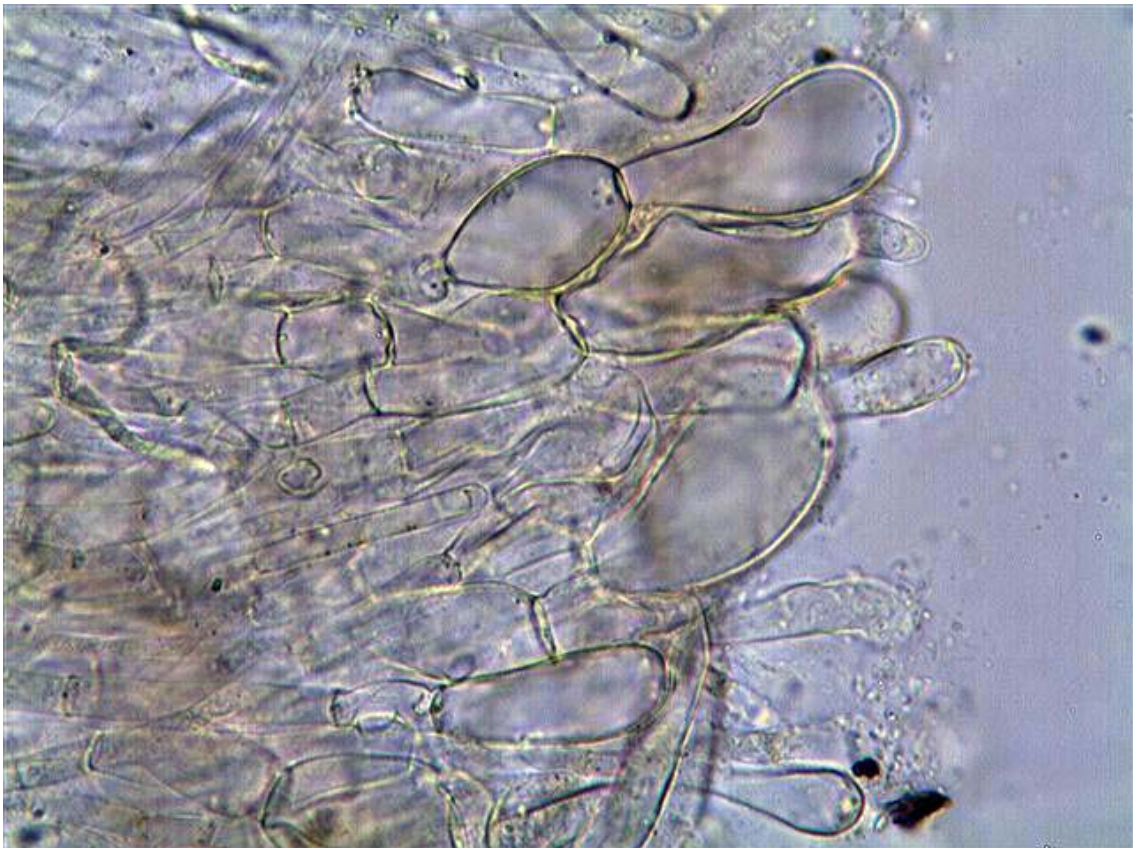
Ascas y parafisis



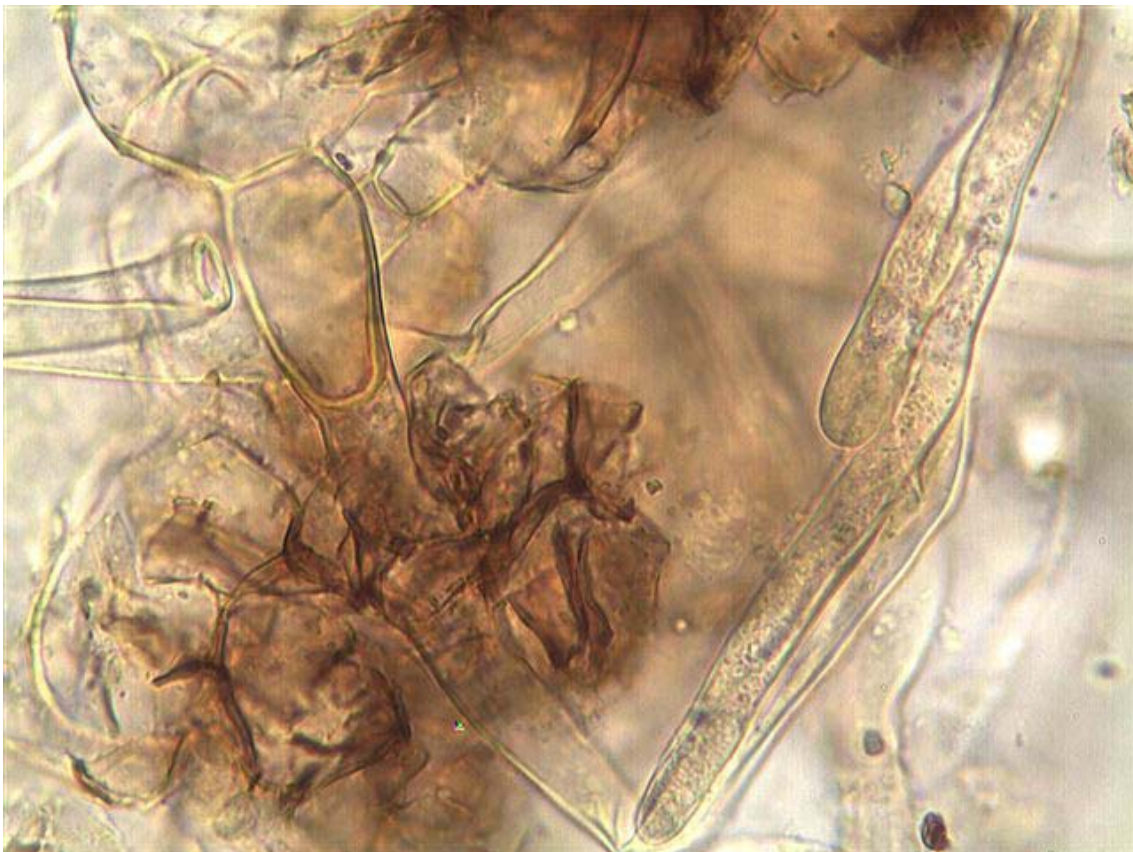
Parafisis bifurcadas



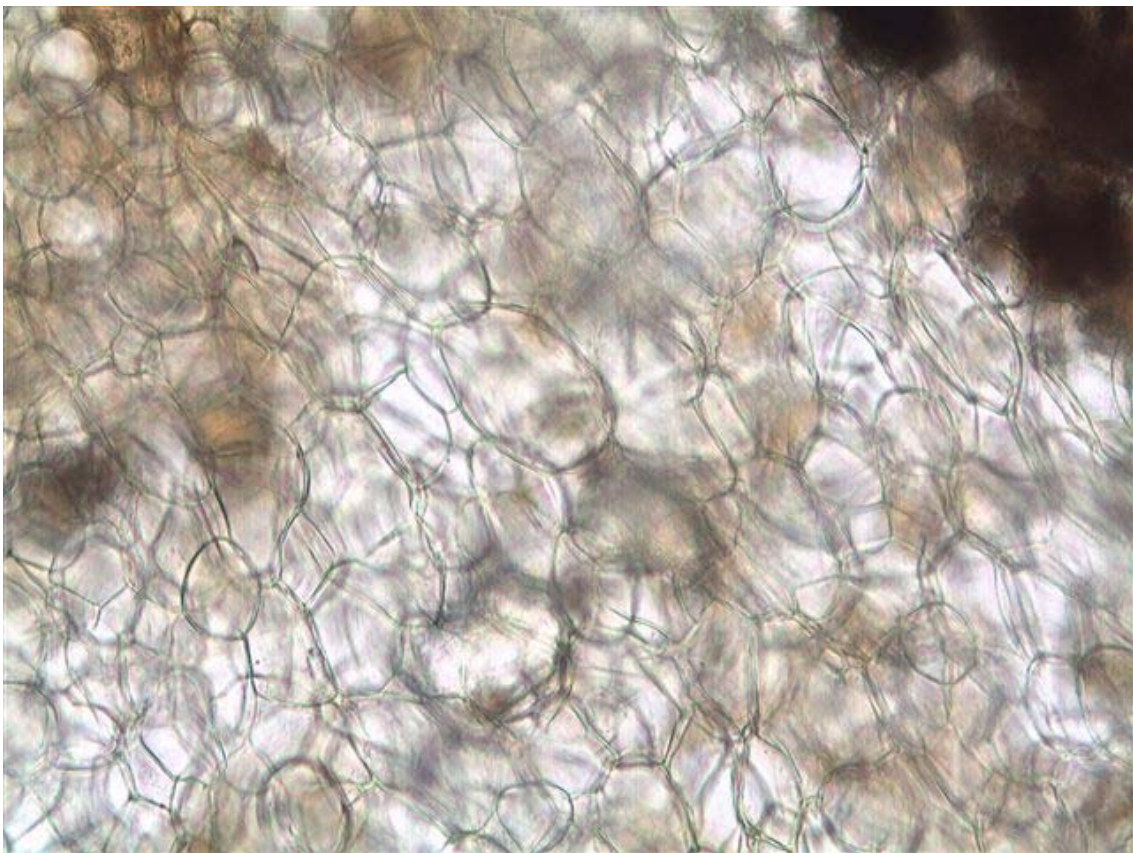
Parafisis con melzer



Pelos del borde



Pelos excípulo



Células excípulo